

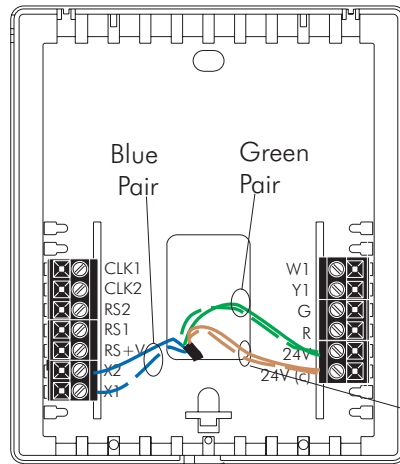
NetworkThermostat Communications Wiring Using Home-Run (Star) Configuration

THERMOSTAT #1

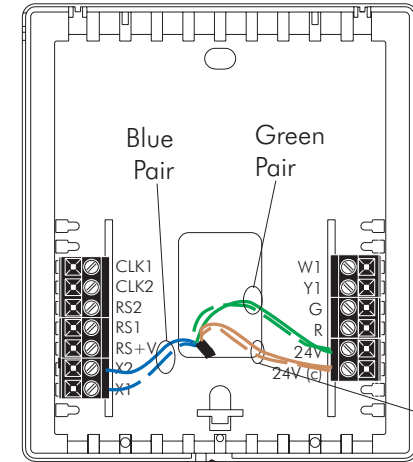
2.....3.....4.....5.....

THERMOSTAT #6

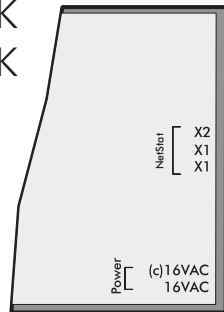
7.....8



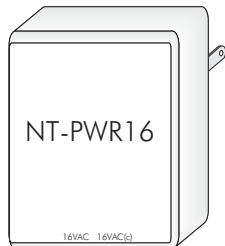
Note:
When powering thermostats over the communications cable, the yellow jumper on the back of the thermostat MUST be removed



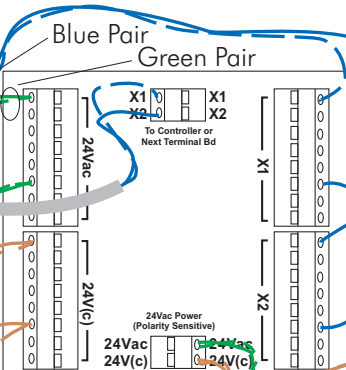
NT-SSA32/CLK
or NT-SSA16/CLK



One (1) NT-PWR16 transformer will power up to two (2) Network Controllers



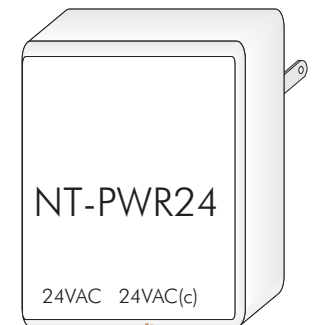
16VAC 16VAC(c)
Brown Pair
Green Pair



- Terminal Board Connections:
- 1) Connect only to same terminations; all X1s together, all X2s together, etc.
 - 2) DO NOT reverse connections on power; 24VAC must ALWAYS connect to 24VAC; 24VAC(c) must ALWAYS connect to 24VAC(c)

NT-TB45 or
NT-TBC

One (1) NT-PWR24 transformer will power up to eight(8) NetworkThermostats



24VAC 24VAC(c)
Green Pair
Brown Pair